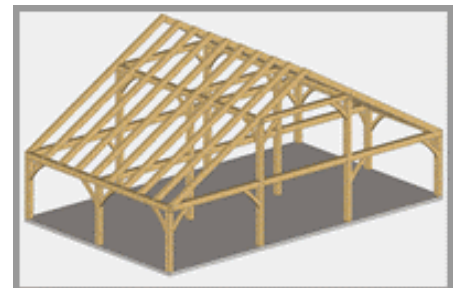
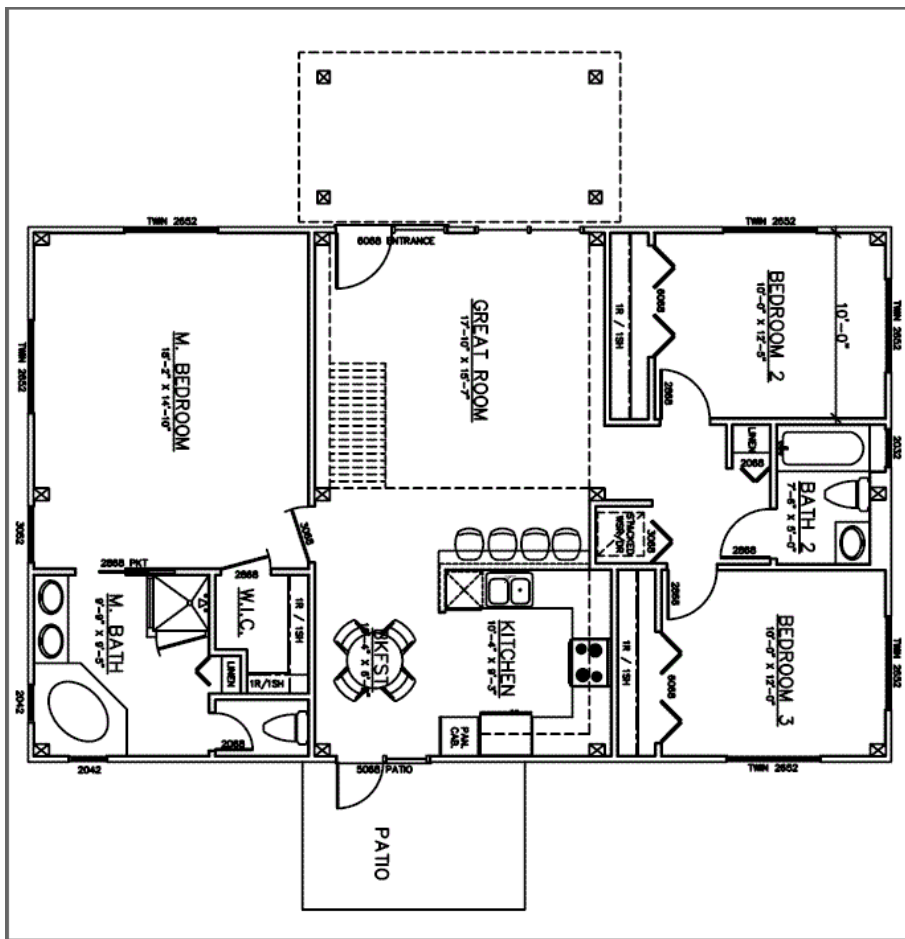




Cabin Creek Timber Frames

Building Tomorrow's Historic Homes Today™

Timber Frame Homes - The Wesa Floor Plans and Elevations



The *We-sa* Timber Frame is 28'11" x 46'7" providing 1,347 sq. ft. of living area in the main living area. The timber frame entry is 9'2" x 17'4".

The *We-sa* is a one story, three bent, queen post timber frame plan. The roof pitch is 7/12. Break of the eaves is 8'10". You enter the *We-sa* through the front timber frame porch entry, into the 17'10" x 10' x 7" great room. The kitchen has a dining area, 10'4" x 6'3", along with a breakfast bar that will easily accommodate four. The U-shaped kitchen, 10' x 9'3" is very functionally arranged, and will easily accommodate two-person meal prep. The dishwasher is located near the sink for easy clean up. The

dish washer/sink, stove, refrigerator/pantry area form a very functional work triangle. The kitchen flows out onto the back patio/entertainment area.

The Master suite which lies along one whole side of the timber frame, has easy access to the kitchen for midnight snacks. The Master suite's living area is a roomy 18'2" x 14'10", has two bents visible over head. There is a nice walk in closet just inside the entry to the master suite. The master bath is spacious. Just inside the bathroom entry is a two sink vanity so each person has their own personal room to get ready for their day. A corner soaking or whirlpool tub is next. A separate enclosed shower lies across from the double sinks. The master bath has its own linen closet, always a plus. The commode or water closet is separate from the main bath for privacy.

On the opposite side of the timber frame is the guest or children's area. Each of the bedrooms is 10' x 12'5". Along the interior wall is a large 10' long closet. The long closet areas also act to close off any noise that might come from these rooms. If you are an empty nester either of these rooms would make a nice study, sewing room, library, or guest room. This wing of the house is where the stacked washer & dryer are located. These rooms share a 7'6" x 5' full bath; the linen closet is located just outside the bath.

We-sa means CAT in the Cherokee language. The thing we have noticed most about cats is they are where it is most comfortable. That is why we have chosen the name we-sa for this quietly elegant timber frame home.

Please keep in mind this is only a suggested floor plan. The timber frame is structural in and of itself. The interior walls are not used to support the house therefore doors, windows, walls, may be placed where you desire.

Cabin Creek Timber Frames

6624 Georgia Rd. - Franklin, NC 28734

Toll Free Phone: **(877) 369 – 5899**

Phone: **(828) 369 - 5899**

Or

(828) 349 – 0734

Fax: **(828) 369 - 8512**

info@cabincreektimberframes.com

Copyright © 2006 Cabin Creek Timber Frames