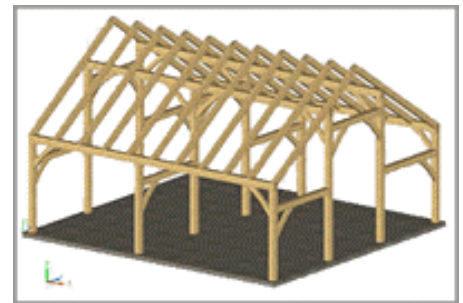
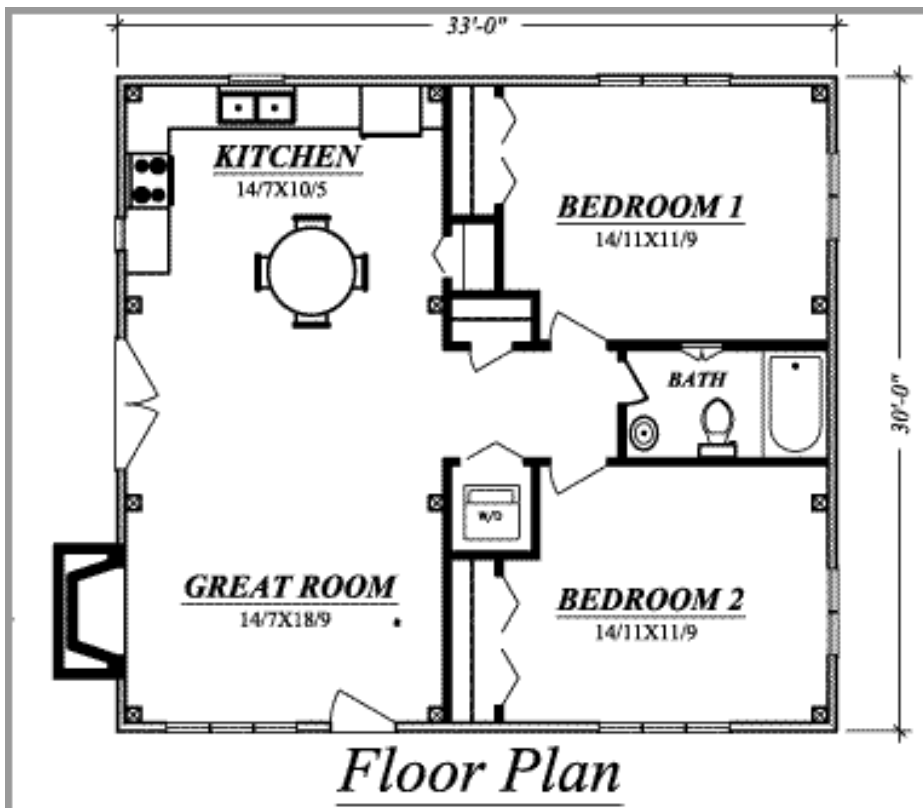




Cabin Creek Timber Frames

Building Tomorrow's Historic Homes Today™

Timber Frame Homes - The Wahsega Floor Plans and Elevations



The Wahsega timber frame cabin is Cabin Creek Timber Frames' interpretation of the cottage our family enjoyed so much upon moving to the Highlands-Cashiers Area some twenty plus years ago.

Though the square footage of the Wahsega is a few feet less than 1000 sq ft. the floor plan give you many custom feature not normally found in cottages of the size. The Wahsega is a great starter home, vacation home, or great empty nest home. The Wahsega could easily be added on to in the future if you desire.

You enter the Wahsega through the French doors above which are double mullioned windows topped with a large paladin window. Directly to the right of the double entry doors, you will find the 14'7" X 18'9'Great Room. Off the Great Room is the coat closet/linen closet.

Directly across from the coat closet/linen closet you will find the over/under washer/dryer.

To the left of the French doors is Wahsega's large "L" shaped eat-in kitchen. The kitchen also has a nice pantry as a bonus. The Wahsega's kitchen has copious amounts of counter space....the amount one would usually expect to find in a home twice its size.

The foot print shown here pictures two bedroom 14'11" X 11'9'bedrooms that share a dividing bath. It could just as easily be built with a large master bedroom with the bath off-suite.

Wahsega was a famous Cherokee Chief who lived in the area now known as Dahlonega, Georgia.

Please keep in mind this is only a suggested floor plan. The timber frame is structural in and of itself. The interior walls are not used to support the house therefore doors, windows, walls, may be placed where you desire.

Cabin Creek Timber Frames

6624 Georgia Rd. - Franklin, NC 28734

Toll Free Phone: **(877) 369 – 5899**

Phone: **(828) 369 - 5899**

Or

(828) 349 – 0734

Fax: (828) 369 - 8512

info@cabincreektimberframes.com

Copyright © 2006 Cabin Creek Timber Frames