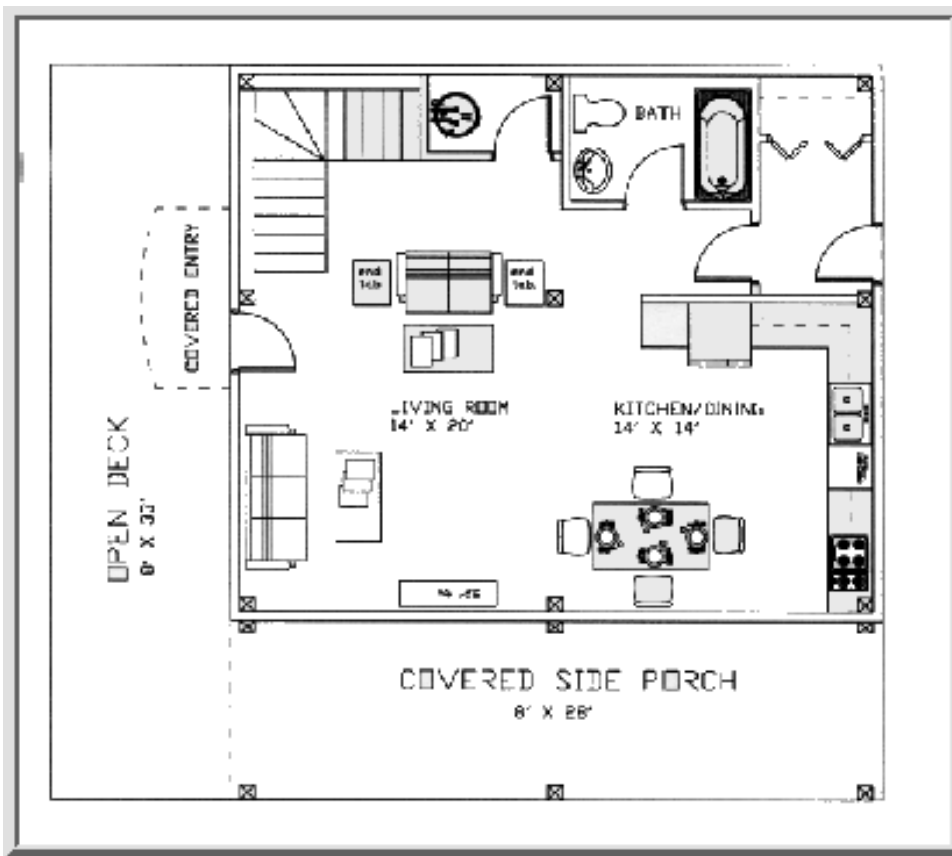




Cabin Creek Timber Frames

Building Tomorrow's Historic Homes Today™

Timber Frame Homes - The Coweeta Floor Plans and Elevations



The Coweeta timber frame home plan has an open deck on one side of the house and a covered porch on the adjacent side. Both covered porch and open deck are eight feet deep; any less than eight feet deep make one feel cramped and crowded.

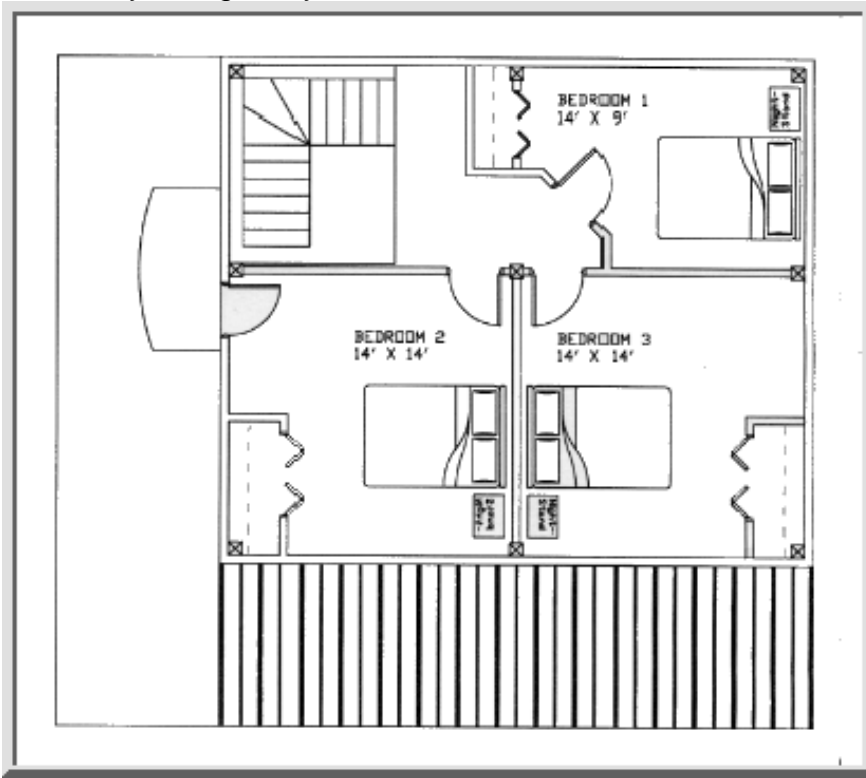
The covered entry on the deck bids you welcome to your timber frame home. Once inside there is a comfortable 14' x 20' living room.

The Coweeta has an L-shaped kitchen with ample counter and cabinet space. The dining area is incorporated into the kitchen area. We are well aware that the kitchen is the heart of many American homes.

The covered side porch off the living room/dining/kitchen areas visually extend you outside giving you a

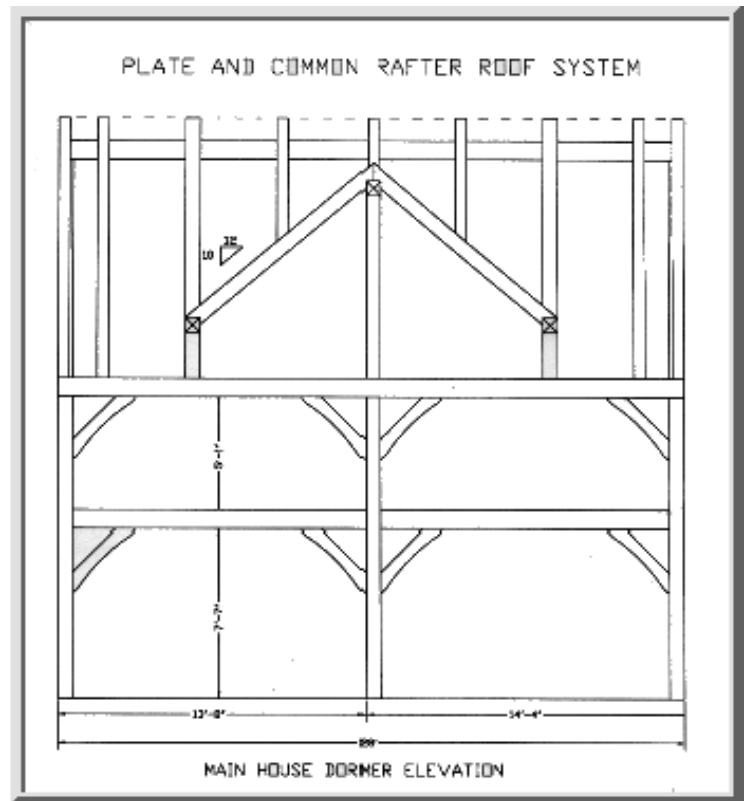
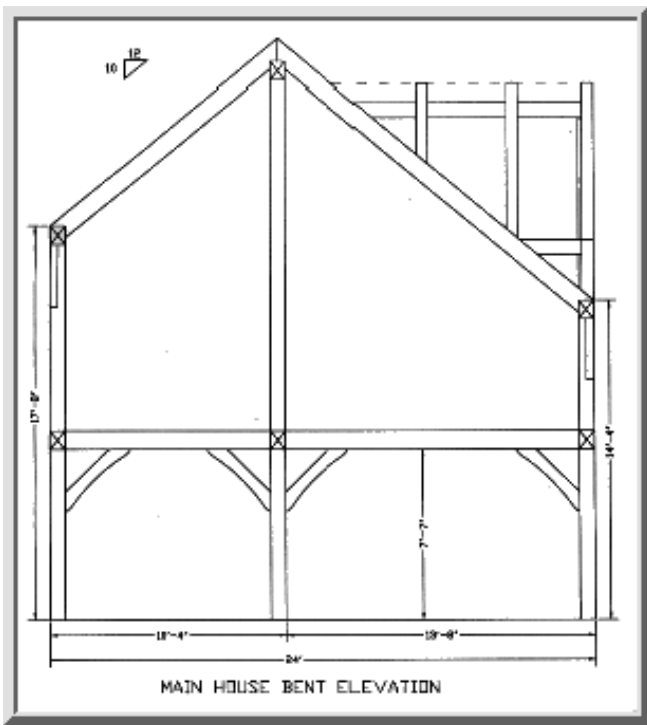
more spacious roomy feeling. This area is the perfect place to show off your view if you have one. The stairs to the left of the entry take you not only to the second floor, but conceal a laundry center beneath them.

- 1) The rear entry opens into the mud room adjacent to the full bath.
- 2) The rear entry to the first floor opens to the mud room with a half-bath off to the side. Past the mud room on your right is your home office.



- 1) The second floor has ample room for 3 bedrooms with closets behind bi-fold doors.
 - 2) The second floor has two 14' x 14' bedrooms that share the 14' x 9' full bath.
- The Coweeta is to be considered any time your site space is limited. The Coweeta also makes an excellent first home, vacation home or retreat.

Please keep in mind that this is only a suggested floor plan. The timber frame is structural in and of itself. The interior walls are not used to support the house and therefore doors, windows, walls, may be placed where you desire.



Cabin Creek Timber Frames

6624 Georgia Rd. - Franklin, NC 28734

Toll Free Phone: **(877) 369 – 5899**

Phone: **(828) 369 - 5899**

Or

(828) 349 – 0734

Fax: **(828) 369 - 8512**

info@cabincreektimberframes.com

Copyright © 2006 Cabin Creek Timber Frames