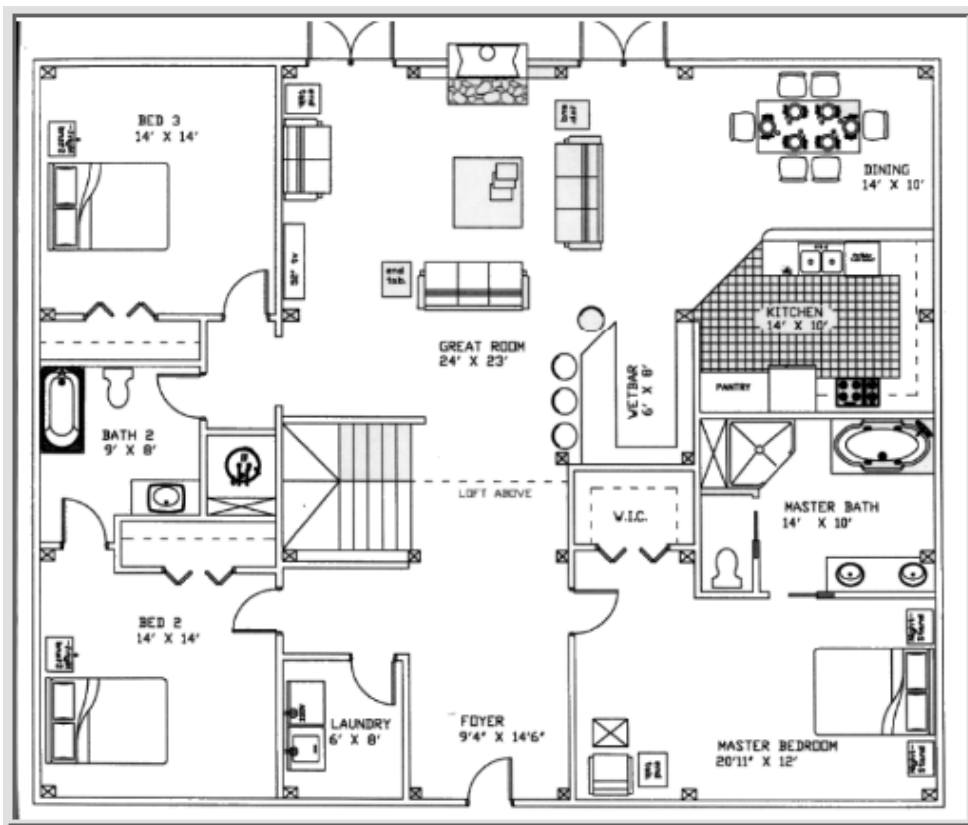




Cabin Creek Timber Frames

Building Tomorrow's Historic Homes Today™

Timber Frame Homes - The Cullasaja Floor Plans and Elevations



The Cullasaja timber frame home plan has been popular with our clients from the first day it was offered. It features a timber frame core complete with hammer beam truss over the great room. On each side of the central core there is located a 'side shed'.

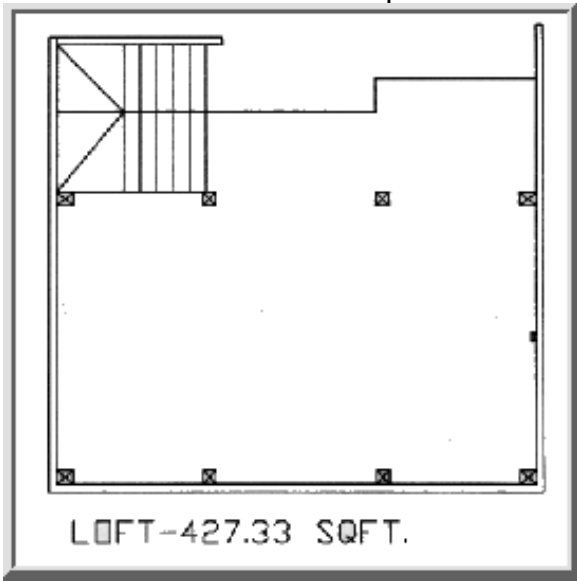
The central core gives you the timber frame home owner, the familiar spaciousness with its vaulted ceiling that is so much the hallmark of the timber frame home. The double 'side shed' areas of the central core afford you a homier nest like feeling.

When you enter the foyer of the Cullasaja you will see the stairs to the second floor loft (located above you) to your left; the view immediately to the right of the stairs gives you a glimpse of truly beautiful things to come. Above your head as you enter the great room is the beautiful hammer beam truss (bent #3 on timber frame home plan). The great room measures a modest 24' x 23'. An entertainment plus in this great room is

the wet bar, even if you are only serving ice cream sodas. This great room also features double French doors that invite you outside.

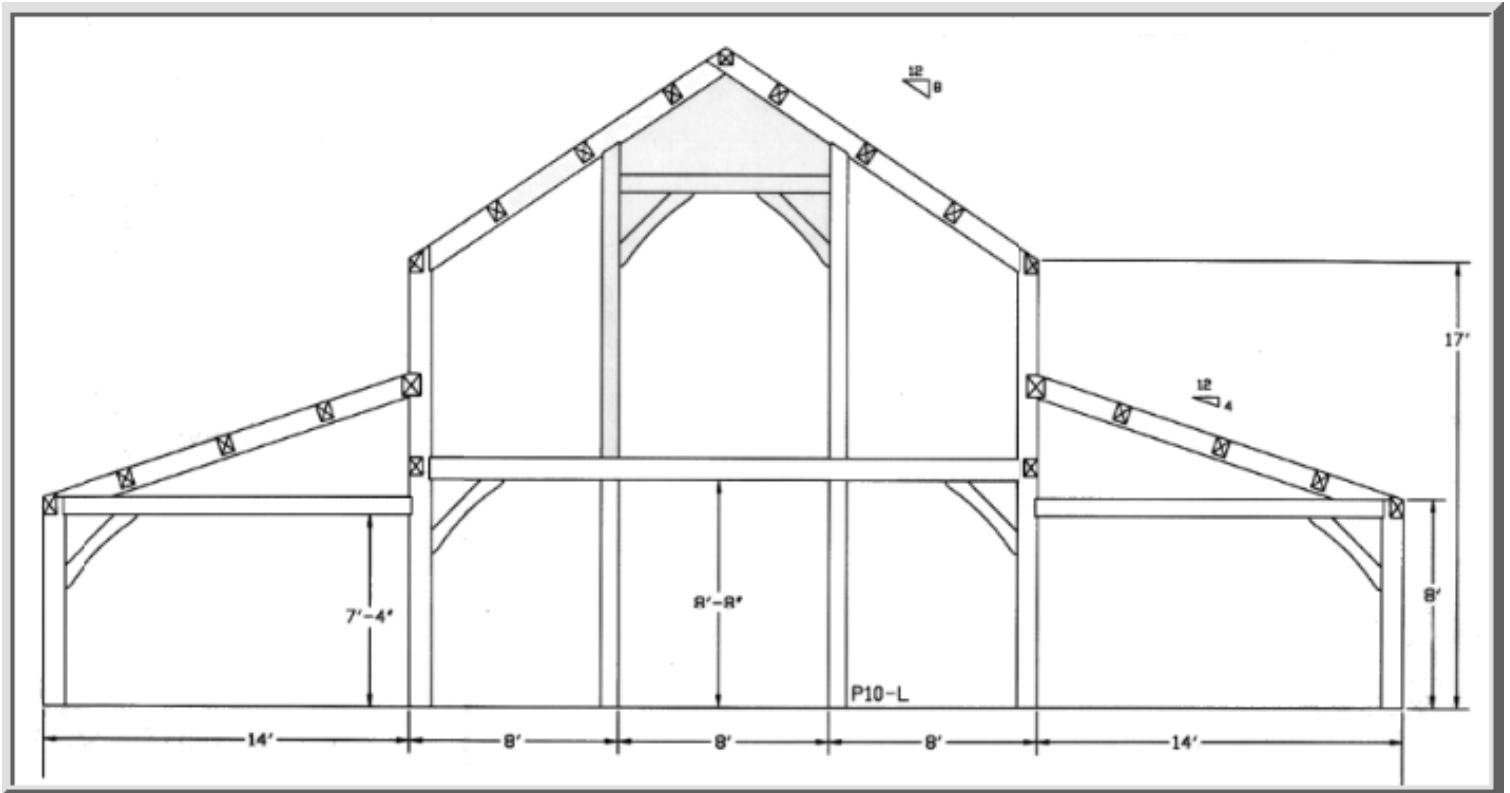
To the far right of the great room is the 14' x 10' dining area. The dining area is shielded from the kitchen by a raised counter. You and your guests can easily converse, but the clutter of daily life and meal preparation is not obvious. The areas that are under 'shed roofs' provide you with a much warmer more intimate area for preparing meals, dining et al.

The master suite of the Cullasaja is located immediately to the right of the foyer. The 20'11" x 12' master bedroom has space enough for you to comfortably sleep; along with an additional bed-setter area, reading, relaxing alcove. The master suite has a large walk in closet. The master bath has double sinks, whirlpool or soaking tub, shower stall and private enclosed alcove for the water closet. The shed to the left of the central timber frame core houses two 14' x 14' bedrooms, each with its own large closet. These two bedrooms share the bathroom that separates them.



The Cullasaja has a loft area (over the first floor foyer) that is open to view the great room. We have had clients who have used this 427 sq ft of living space as an exercise area. It would also make an excellent library home office or sewing room.

Please keep in mind this is only a suggested floor plan. The timber frame is structural in and of itself. The interior walls are not used to support the house therefore doors, windows, walls, may be placed where you desire.



Cabin Creek Timber Frames

6624 Georgia Rd. - Franklin, NC 28734

Toll Free Phone: **(877) 369 - 5899**

Phone: **(828) 369 - 5899**

Or

(828) 349 - 0734

Fax: **(828) 369 - 8512**

info@cabincreektimberframes.com

Copyright © 2006 Cabin Creek Timber Frames