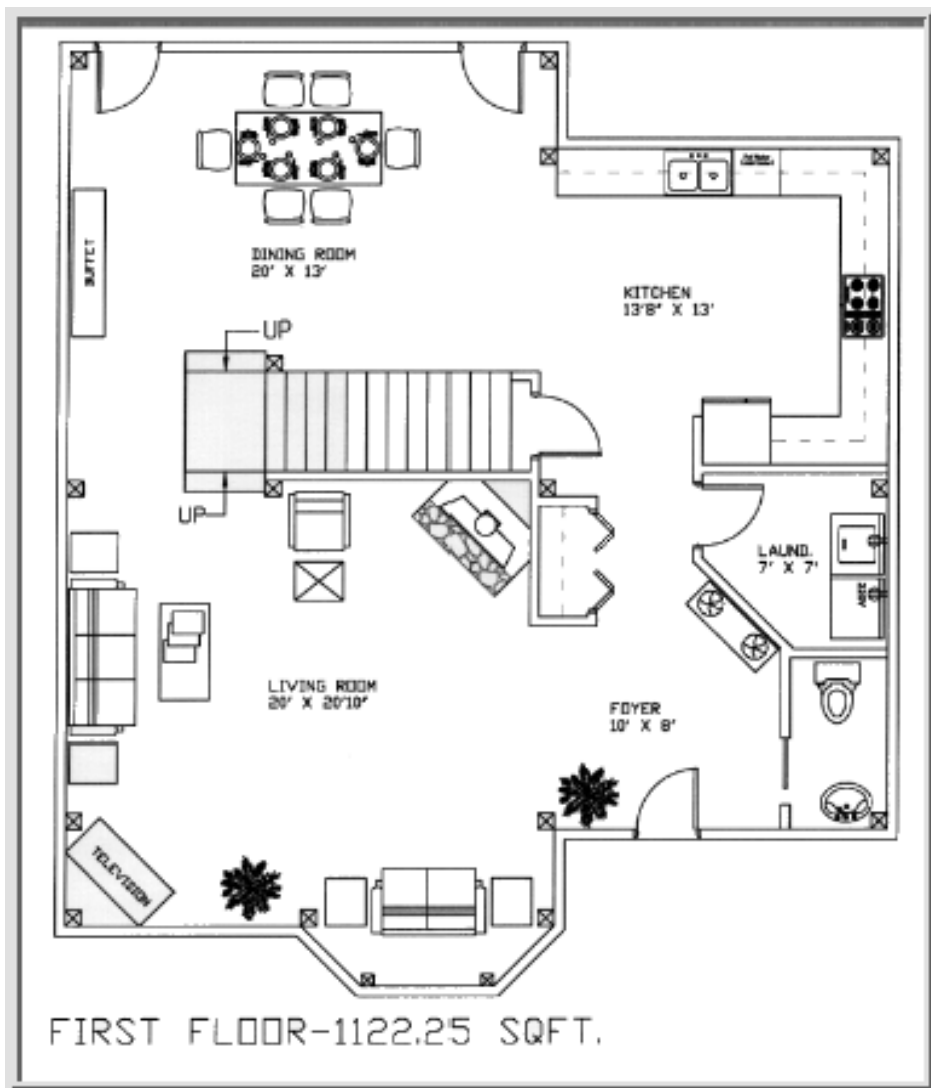




Cabin Creek Timber Frames

Building Tomorrow's Historic Homes Today™

Timber Frame Homes - The Watauga Floor Plans and Elevations

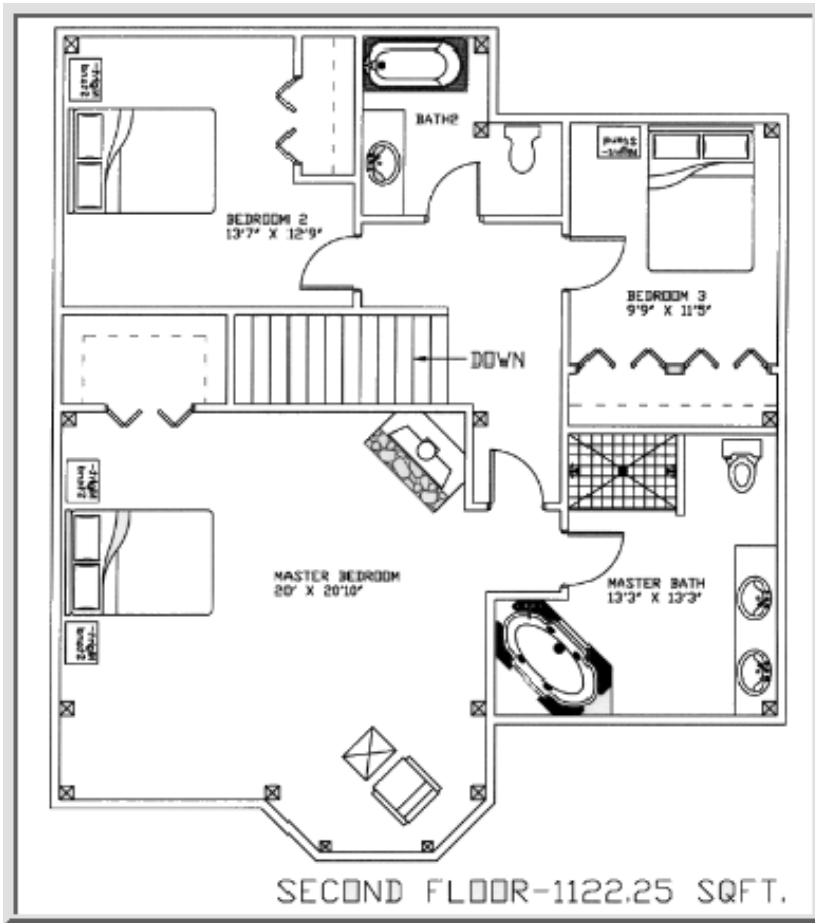


As you enter the foyer (10' x 8') of the Watauga timber frame home you will find a half guest bath directly to your right; along with a large coat closet.

Immediately to your left after the foyer is a spacious 20' x 20'10" great room with corner fireplace; a great place to be with family and friends.

In the Watauga timber frame home one can access the stairs from the living room or dining room, a real plus for busy families.

The Watauga's dining room is large enough to accommodate large family gatherings or parties with your friends. The Watauga's kitchen is large enough to easily accommodate two cooks at one time.



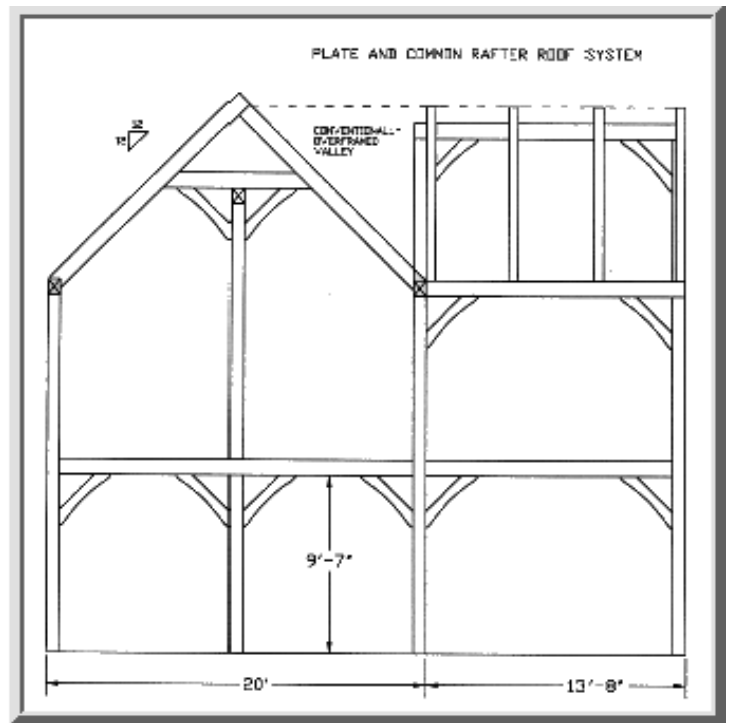
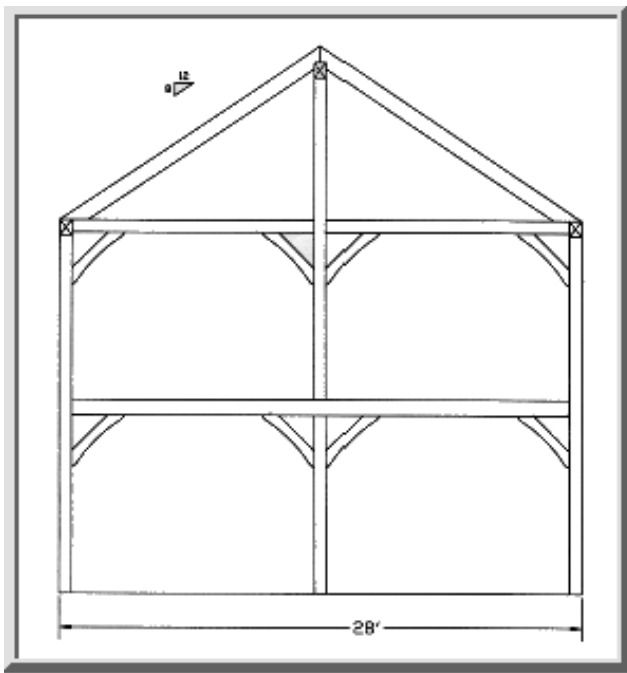
The Watauga's dining room is large enough to accommodate large family gatherings or parties with your friends.

Once you ascend the Watauga's stairs to the second floor the master suite will be to your right. The master suite features a large 20' x 20'10" master bedroom with walk-in closet. The Watauga's master suite has a romantic corner fireplace and lovely bay window alcove for quiet reading or relaxing.

The master bath is a spacious 13'3" x 13'3" featuring double sink, whirlpool or soaking tub, shower for two and water closet alcove.

To the left of the stairs on the second floor you will find two additional large rooms that may be used as bedrooms, den or library, or home office. These two rooms share the bathroom that separates them.

Please keep in mind this is only a suggested floor plan. The timber frame is structural in and of itself. The interior walls are not used to support the house and therefore doors, windows, walls may be placed where you desire.



Cabin Creek Timber Frames

6624 Georgia Rd. - Franklin, NC 28734

Toll Free Phone: **(877) 369 - 5899**

Phone: **(828) 369 - 5899**

Or

(828) 349 - 0734

Fax: **(828) 369 - 8512**

info@cabincreektimberframes.com

Copyright © 2006 Cabin Creek Timber Frames