

CABIN CREEK TIMBER FRAMES

CURRENT PROJECTS

Spring 2005

www.cabincreektimberframes.com

info@cabincreektimberframes.com

P.O. Box 450/471 Depot Street
Franklin, North Carolina 28744

Toll Free 877.369.5899

Local Phone 828.369.5899

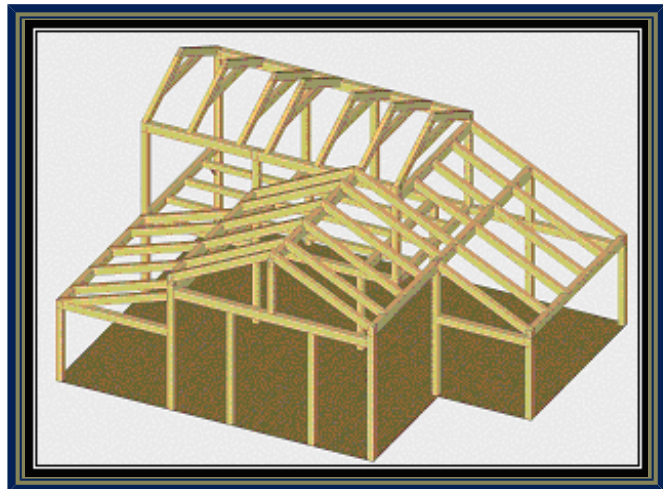
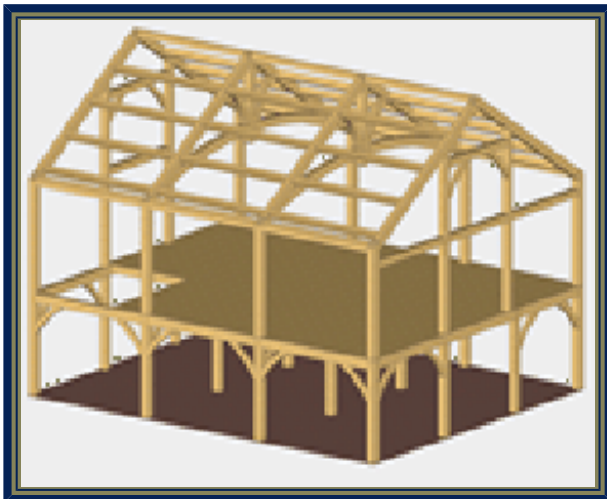
Fax 828.369.8512

Cabin Creek Timber Frames designed, cut and trial fitted these double hammer beam trusses in our beamery in Franklin, for Hammerhead Construction. The trusses were then transported to the jobsite, where we raised them inside their new home near Charlotte, NC.

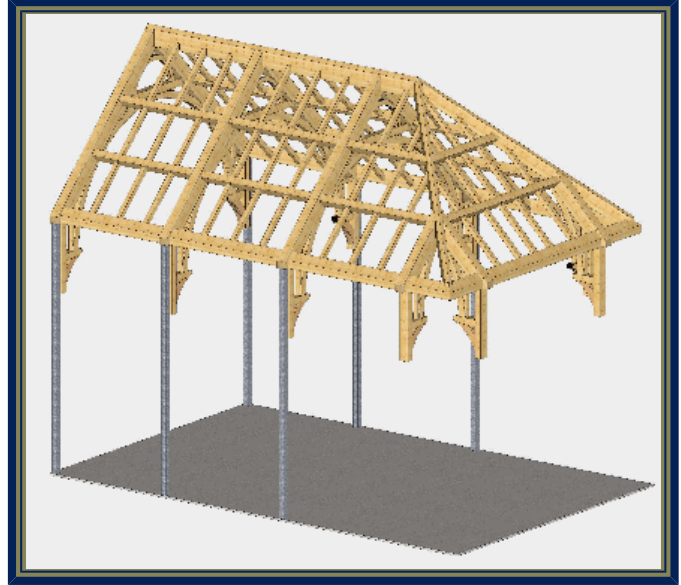
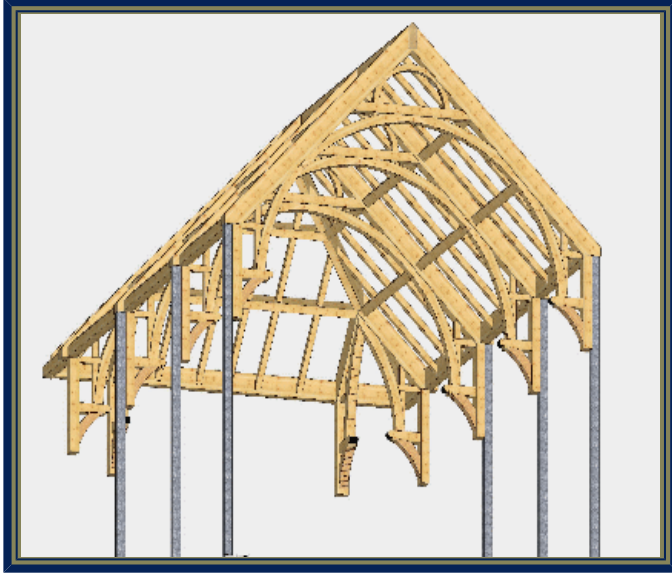


Spring is here, several of our clients will be having raisings soon.

Shown below (left) is a 3d drawing of the custom timber frame home that is to be raised here in Franklin, NC the third week of March, 2005. The 3d drawing (below right) is of another custom timber frame home that will be raised later this spring in Sylva, NC.

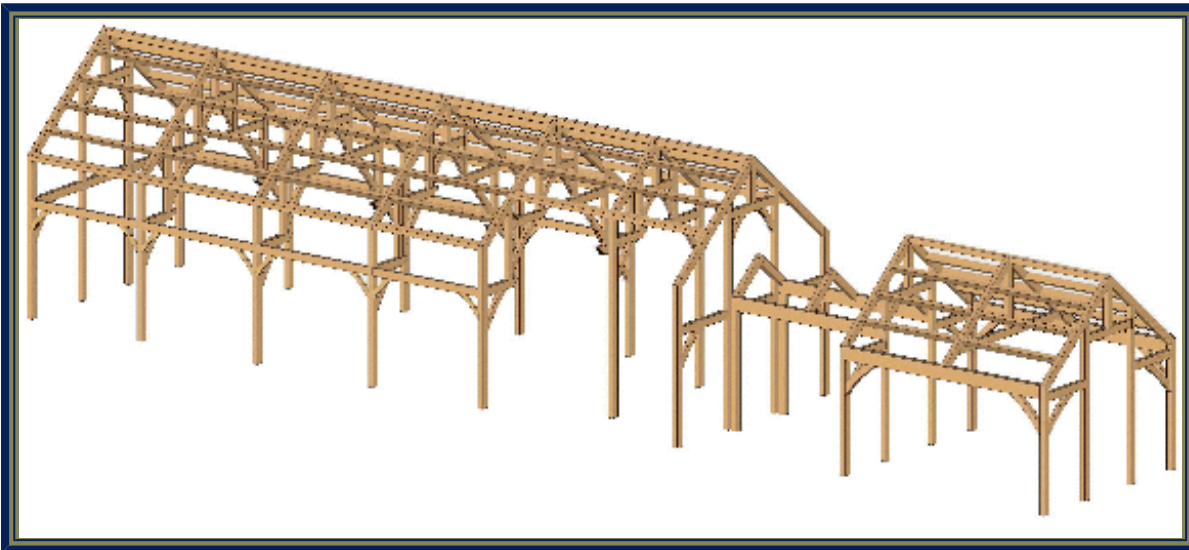


Also in the works are some very elegant compound joinery timber frames roof trusses we are doing for a client in Nashville, TN. Pictured (below left) is a roof truss system comprised of white oak timbers with a hip frame on the distal end. The timber frame design demonstrates intricate compound joinery using multiple arched timbers to accentuate the clients design. This design is reminiscent of church roofs one might visit in England today.



Not pictured is the octagonal roof system for the porch. It also demonstrates intricate compound joinery. The roof system for the porch will also be cut of white oak.

Cabin Creek Timber Frames design team was asked by Ritter Architecture, AIA of Franklin, NC, to do the timber frame drawings for the new Macon County library, Franklin, NC. These timber frame trusses are to be crafted from Douglas fir.



Do you want to come to a Raising???

If you would like to be put on our email list of 'people to notify for raising' just email us at info@cabincreektimberframes.com and we will send you an email approximately a week ahead of time.

We invite you to visit our website at www.cabincreektimberframes.com or better yet....come and visit our beamery and meet our timber framers.

Copyright © 2005 Cabin Creek Timber Frames

Webdesign & Maintenance: Regina
